

GATEX PRO

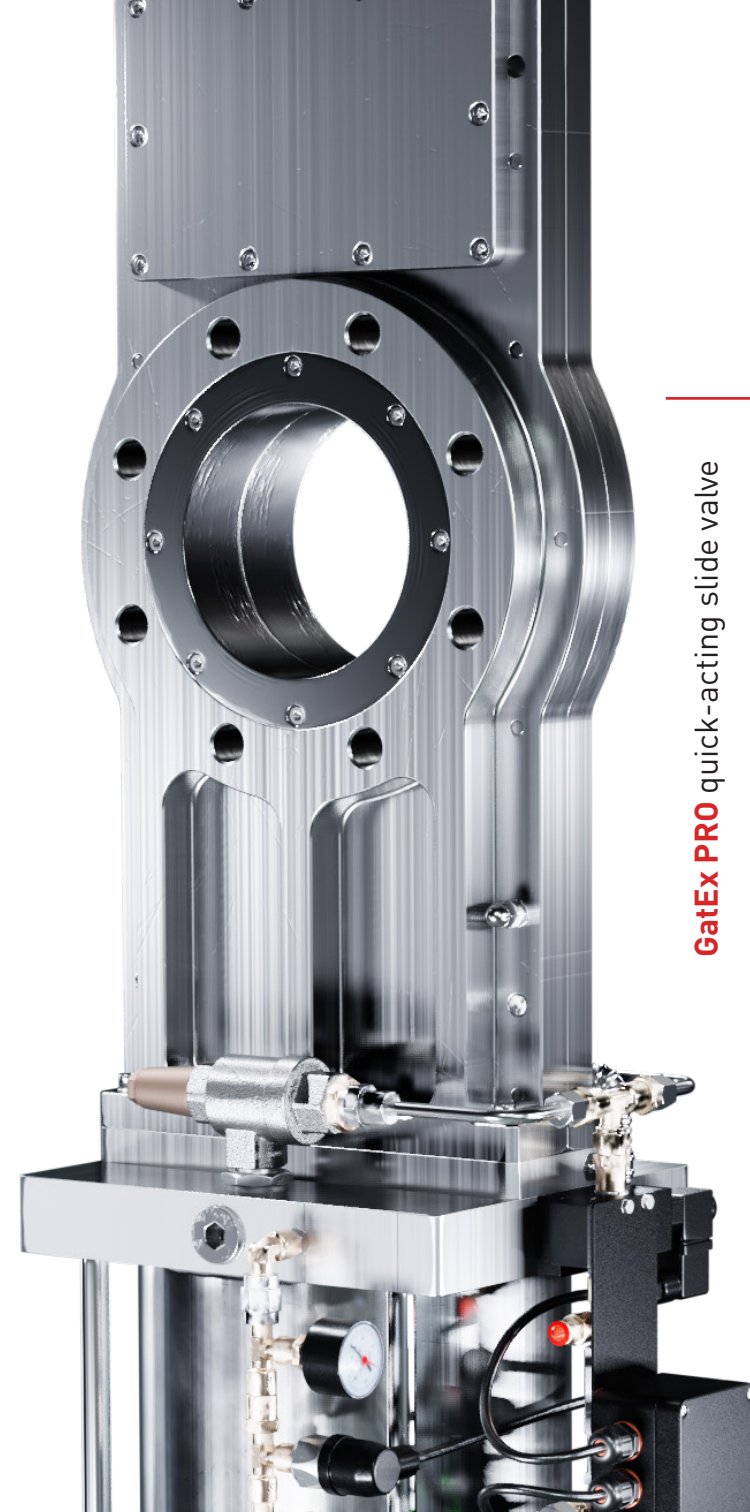
quick-acting slide valve

The GatEx PRO quick-acting slide valve is an explosion isolation device used to completely close off the pipeline in the event of an explosion. The GatEx PRO is suitable for applications in pneumatic conveying, extraction systems, as well as for explosion isolation between technologies or for process units designed for maximum explosion pressure.

Benefits & applications

- + dust class St1 / St2 / St3 (metallic, non-metallic dust)
 - + extremely fast response time
 - + pressure resistance up to 21 bar
 - + installation distance up to 40 meters
-
- fail-safe design
 - GatEx PRO activation:
 - pressure detector, optical detector or explosion venting device
 - 7 dimensional designs

✓ EN 15089 ✓ NFPA 69



GatEx PRO quick-acting slide valve